

Test Resource Management Center (TRMC) Overview

Regional Defense Partnership – 21

Joyce “JC” Heilman
Acting Division Chief, Test Resources Governance Division
Test Resource Management Center

May 2024



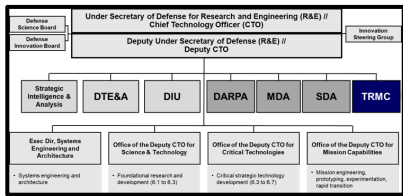


TRMC Organization



As of 09 MAY 2022

Under Secretary of Defense for Research and Engineering (R&E) // Chief Technology Officer (CTO)



Test Resource Management Center

Director

Principal Deputy Director

Chief Operating Officer

Chief Financial Officer

Chief Information Officer // Cyber Executive Agent

Chief Data Officer

Test Resource – Governance (TR-G)

- Test Ranges/Facilities/Capabilities Oversight
 - Major Range and Test Facility Base (MRTFB)
 - Chemical/Biological Test Facilities
 - Cyber Ranges and Software Testbeds
- Service/Agency T&E Budget Certification
- Range Sustainability
 - Environmental / Spectrum / Other Encroachment
 - Climate Change Impact Mitigation
- Test Range & Facility Workforce
- Test Range & Facility Policy
- Real Property / Infrastructure / MILCON
- T&E Master Plan (TEMP) Review (Resources)
- International Partnerships (for test capabilities)
- Other Federal Partnerships (DoE, DoT, DHS)

Test Resource – Modernization (TR-M)

- Strategic Plan for Test Resources
 - 30-year outlook
 - Updated annually
- Future Test Needs Forecast
 - Both capability and capacity needs
- Strategic Portfolios
 - Defense modernization acceleration
- Foundational Portfolios
 - Enterprise-wide test capabilities
- Test Resource Investment Roadmaps
- DoD Modernization Test Schedule Deconfliction Clearinghouse

Test Resource – Investments (TR-I)

- Test Technology Development
 - Test & Evaluation / Science & Technology
- Test Capability Development
 - Central T&E Investment Program (CTEIP)
- Cyber Environments and Test Tools
 - National Cyber Range Complex (NCRC)
- Joint Mission Environ. Test Cap. (JMETC)
 - JMETC Secret Network (JSN)
 - JMETC MILS Network (JMN)
 - Test & Training Enabling Arch. (TENA)
- Multi-Domain Operations Testing
- Mission-level // Digital Engineering
- Cloud T&E Services // DevSecOps
- Knowledge Management // Big Data



TRMC Investment Portfolios

Legacy Investment Structure

Long-Term multi-Service Investments			Near-Term Investments	
Joint Improvement & Modernization (JIM)			Resource Enhancement Project (REP)	Threat Systems Project (TSP)
JIM-Core	JIM-EW	JIM-Hypersonics		
<ul style="list-style-type: none"> 3-5 year requirement horizon EMD of major multi-Service test capabilities Development, not procurement Services & Agencies budget for O&M \$110-140M/year, \$600-\$700M over 5 years 	<ul style="list-style-type: none"> Special DoD area of emphasis EMD of electronic warfare (EW) test capabilities Assess aircraft performance against complex new threats. Service budget for O&M Total cost ~\$465 over ~7 years 	<ul style="list-style-type: none"> Special DoD area of emphasis EMD of hypersonic ground test capabilities Focus on hypersonic cruise & boost glide missiles Service budget for O&M Total cost ~\$350 over ~5 years 	<ul style="list-style-type: none"> 1-2 year horizon EMD of instrumentation to address near term OT shortfalls Coordinated with DOT&E \$18-20M/year 	<ul style="list-style-type: none"> 1-2 year horizon Address shortfalls in threat systems representation Coordinated with DOT&E \$3-5M/year

Portfolio Investment Structure

• Strategic Portfolios

- Hypersonics
- Directed Energy
- Cyber
- Nuclear
- Electronic Warfare
- Space
- Autonomous Systems (and Artificial Intelligence)
- Multi-Domain Integration

• Foundational Portfolios

- Common Range Instrumentation
- Target/Threat Systems
- Knowledge Management (and Big Data Analytics)

• Major Projects

- Joint Improvement Modernization
- Quick Reaction Test Capability

Strategic Portfolios cover both Offensive & Defensive

Portfolios support testing across all paths of the acquisition framework (Major Capability, MTA, Software, etc.)

Portfolios support all types of testing (Demos, Experiments, DT, OT, etc.)

Portfolios consist of investments across all test resource categories (M&S, Test Facilities, HWILs, SILs, Test Ranges, STBs, Workforce, etc.)

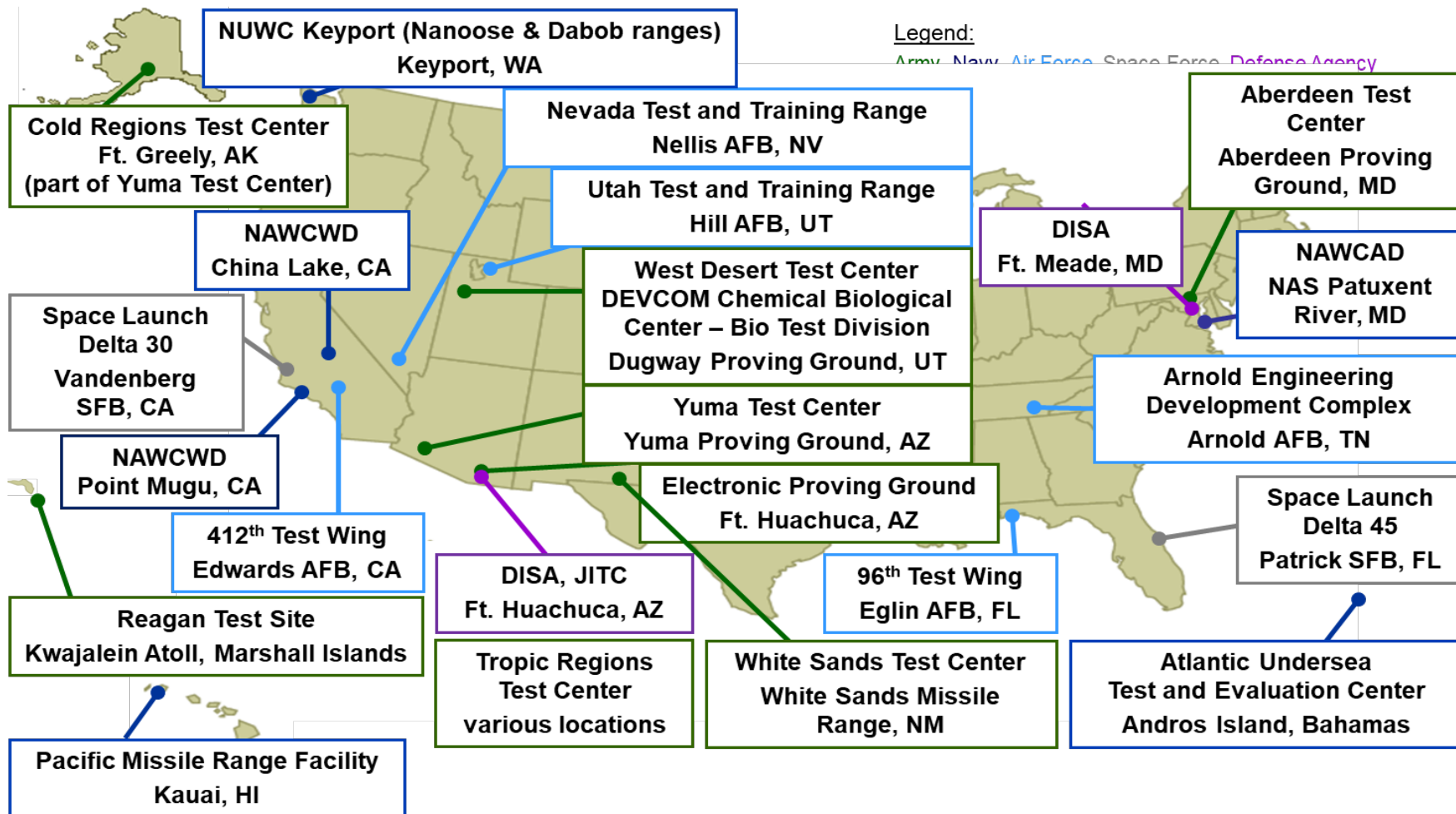


Major Range and Test Facility Base

As of 26 AUG 2022

Major Range and Test Facility Base: The "Critical Core"

23 Sites: 8 Army, 6 Navy, 5 Air Force, 2 Space Force, 2 Defense Agency





T&E Workforce Accelerator (TEWA) Intern Program



- A pipeline of STEM T&E professionals aligned to T&E Strategic Portfolios (Hypersonics, Directed Energy, Nuclear Survivability, etc.)
- For 2024: Increase in intern flow, expand to additional T&E ranges and labs, align to universities participating in T&E focus area projects
- For 2025:
 - Expand to selected labs (Ex: Directed Energy at Point Mugu)
 - Pilot of Artisan program with NAWCWD-Point Mugu
 - Electronics/Mechatronics Technician Certification with Moorpark College
 - Pipeline for NAWCWD Point Mugu, widely applicable certifications
 - Intern program for student and Point Mugu to “test drive” each other
 - Engage with Kern County Community College District to develop similar relationship for NAWCWD China Lake and 412th Test Wing
 - Additional pilot opportunities in SOCAL



Hiring Retired Military



- Original: 180-day waiting period
- Recent Legislation: Hiring within 180-day waiting period required a waiver
- Current Guidance: DoD removed 180-day waiting period when using MRTFB Direct Hire Authority



Questions and Answers



Thank you for your time today.

Questions?



TRMC Test Modernization Priorities



- Hypersonics
- Directed Energy
- Cyber
- Nuclear
- Electronic Warfare
- Space
- Autonomous Systems
- Multi Domain Integration
- Common Range Instrumentation
- Target/Threat Systems
- Knowledge Management