



# Naval Construction Force Update



For  
Regional Defense Partnership  
06 March 2025

Overall Classification  
**UNCLASSIFIED**



# Agenda



- Who are the Seabees?
- Naval Construction Force Laydown
- Organizational Structure
- Naval Construction Group ONE
- Seabees in Action
  - NCF Force Employment
  - Pacific Deployed Operations
  - Seabees Return to Antarctica
- Industry and Community Partnerships
- Closing Thoughts



# What is the Naval Construction Force? (i.e. The Seabees)



- The Seabees were founded in 1942 to perform expeditionary engineering and construction during peace and wartime
- Capabilities
  - Airfields: Construction, improvement, repair and maintenance
  - Port Facilities: Construction, improvement, repair and maintenance
  - Advanced Naval Bases: Construction, improvement, repair and maintenance
  - General engineering and construction to include roads, pre-engineered buildings, concrete and masonry, etc. (similar to a general contractor)
  - Underwater construction





# Naval Construction Force Laydown



Over 4,000 Seabees assigned to NBVC supporting missions across the Pacific

**AC Units Port Hueneme, CA**

- NCG 1
- NMCB 3
- NMCB 4
- NMCB 5
- UCT 2

**RC Units Port Hueneme, CA**

- 1NCR
- NCB 18
- NCB 22
- NCB 25

**Port Hueneme, CA**  
STEU 1

**San Diego, CA**  
CBMU 303

**AC Units Gulfport, MS**

- NCG 2
- 22NCR
- NMCB 1
- NMCB 11
- NMCB 133

**RC Units Gulfport, MS**

- 7 NCR
- NCB 14
- NCB 27

**Rota, Spain**  
22 NCR (Fwd)

**Hampton Roads, VA**  
CBMU 202  
UCT 1

**Gulfport, MS**  
STEU 2  
UCT 1

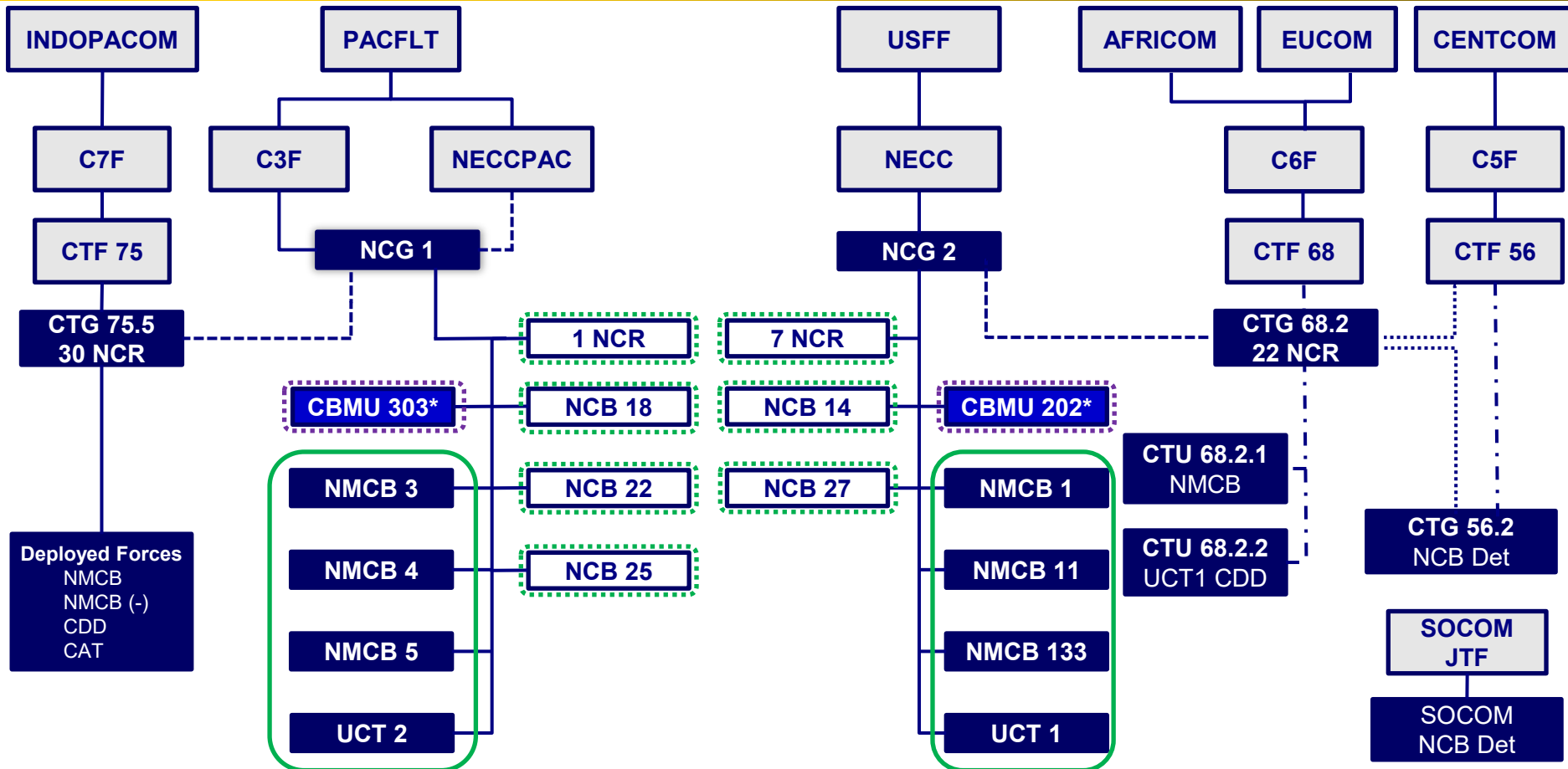
**Santa Rita, Guam**  
30 NCR

### Acronyms

- NCG Naval Construction Group
- NCR Naval Construction Regiment
- NMCB Naval Mobile Construction Battalion
- UCT Underwater Construction Team
- NCB Naval Construction Battalion
- CBMU Construction Battalion Maintenance Unit
- STEU Seabee Training & Evaluation Unit



# Organizational Structure



\* CBMUs transitioning to Seabee Training and Evaluation Unit (STEU)

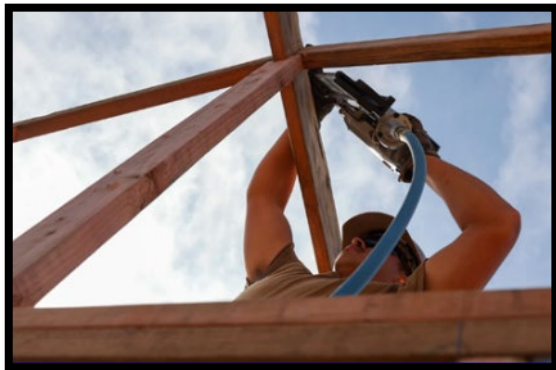
AC Command	RC Command	Rotational Force	RC Deployable	Transitioning to STEU	OPCON	———
					TACON	- - - - -
					ADCON	- - - - -
					Coord. Auth.	.....



# Naval Construction Group ONE

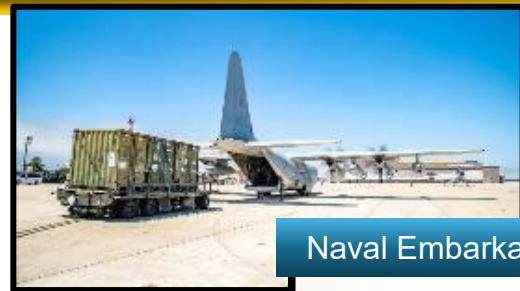


- Administrative and operational headquarters responsible for manning, training, and equipping U.S. Pacific Fleet Seabees and generating forces required for employment as directed by U.S. Indo-Pacific Command and U.S. Pacific Fleet.

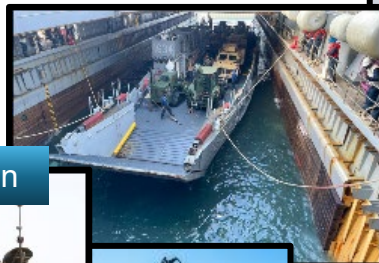




# NCF Mission Sets



Naval Embarkation



Integration & Interoperability



Facilitate Partnerships & Relations



Underwater / Waterfront Construction



Port and Airfield Repair & Opening



Base Construction



**COMPETITION**

- Construction of key infrastructure in support of allies and partners
- Humanitarian Assistance and Disaster Relief
- Build & Sustain Relations
- Multi Service & Multi Nation Integration and Partnerships

**CONFLICT**

- Airfield and Port Damage Repair
- Perform Advanced Base and Expeditionary Medical Facility Construction and Maintenance
- Mobility Enabled by Naval Connectors and Aircraft



# Pacific NCF Deployed Operations

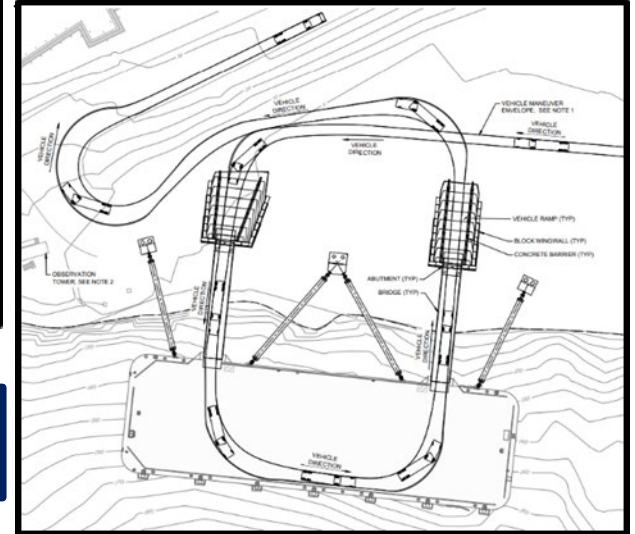
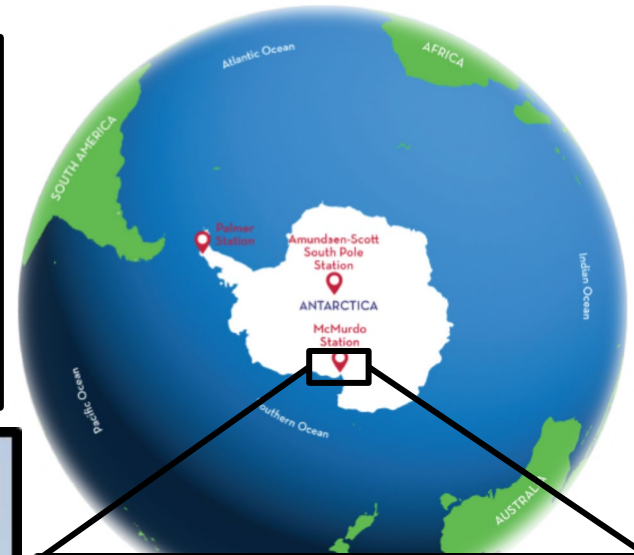


Seabees perform construction within the Pacific to enhance theater infrastructure, build relationships with partners/allies, and posture ready forces





# Seabees Return to Antarctica



Construction of a floating wharf to replace the existing ice pier at McMurdo Station supporting the National Science Foundation



# Partnerships Build Readiness



Partnering with construction industry accelerates projects while developing Seabee capabilities and expertise

Seabees



Industry / Community Partners



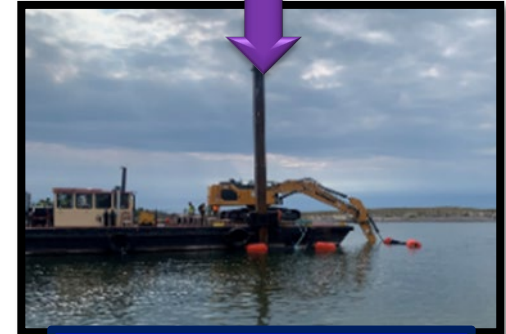
SCI P-762

Project delivery with industry contractor



McMurdo Station

Project delivery with NZ, US industry contractors



Dredging for Michigan community with Army Corps of Engineers



# Innovative Readiness Training Program



IRT is a DoD program that enables military units to meet community needs while building skills essential to military operations. Can be funded by the community partner or funded by DoD IRT funds.

## May be requested by:

- Government entities
  - Federal, regional, state, local
  - State or federally recognized tribes

## IRT Limiting Factors:

- Missions with no military training value
- Law enforcement
- Response to natural or manmade disasters
- Commercial development

More Info at: [www.irt.defense.gov](http://www.irt.defense.gov)



Seabees build homes for Southwest Indian Foundation



Seabees build "search city" for training center in Santa Paula, CA



# Closing Thoughts

- Thank you for supporting our Pacific Seabees and operations at NBVC!
- Seabees are your local military engineering and construction force with reach across the entire Indo-Pacific
- We want to pursue partnerships with local organizations and industry
  - Builds military readiness and increases the expertise of our force
  - Challenging process but outcomes greatly benefit everyone
- Reinvigorating local community outreach
  - IRT partnerships
  - Seabee Day planning on-going for Fall 2025

